



Antarctic Peninsula in Depth

The ultimate days to discover the wonders of the **Antarctic Peninsula** in the peak of summer, when tiny penguin chicks are growing quickly, fur seal pups are being weaned & whales start to arrive in larger numbers to feed on krill. Near-endless hours of daylight means more time for exploration – Zodiac cruising, walking, snowshoeing, snorkeling & kayaking.

15 Days

Ship: **Greg Mortimer**

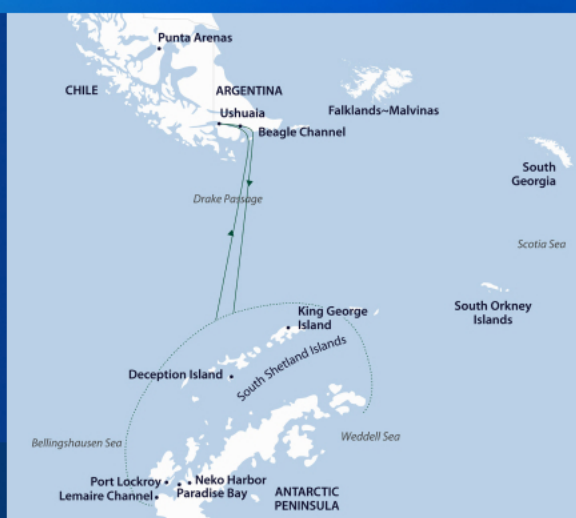
Sail Dates: **23 Oct & 28 Nov 2023**

Departure/Arrival: **Ushuaia, Argentina
(Roundtrip)**

Starting Fare

US\$ 12,716.00 per person*

[Explore Itinerary](#)



*Conditions Apply

For more information and bookings, please contact:

CruiseBay

201-202, 2nd Floor, Jewel Tower, Koregaon Park, Pune 411001

Tel: 020-66442999 | Email: info@cruisebay.in | Website: www.cruisebay.com